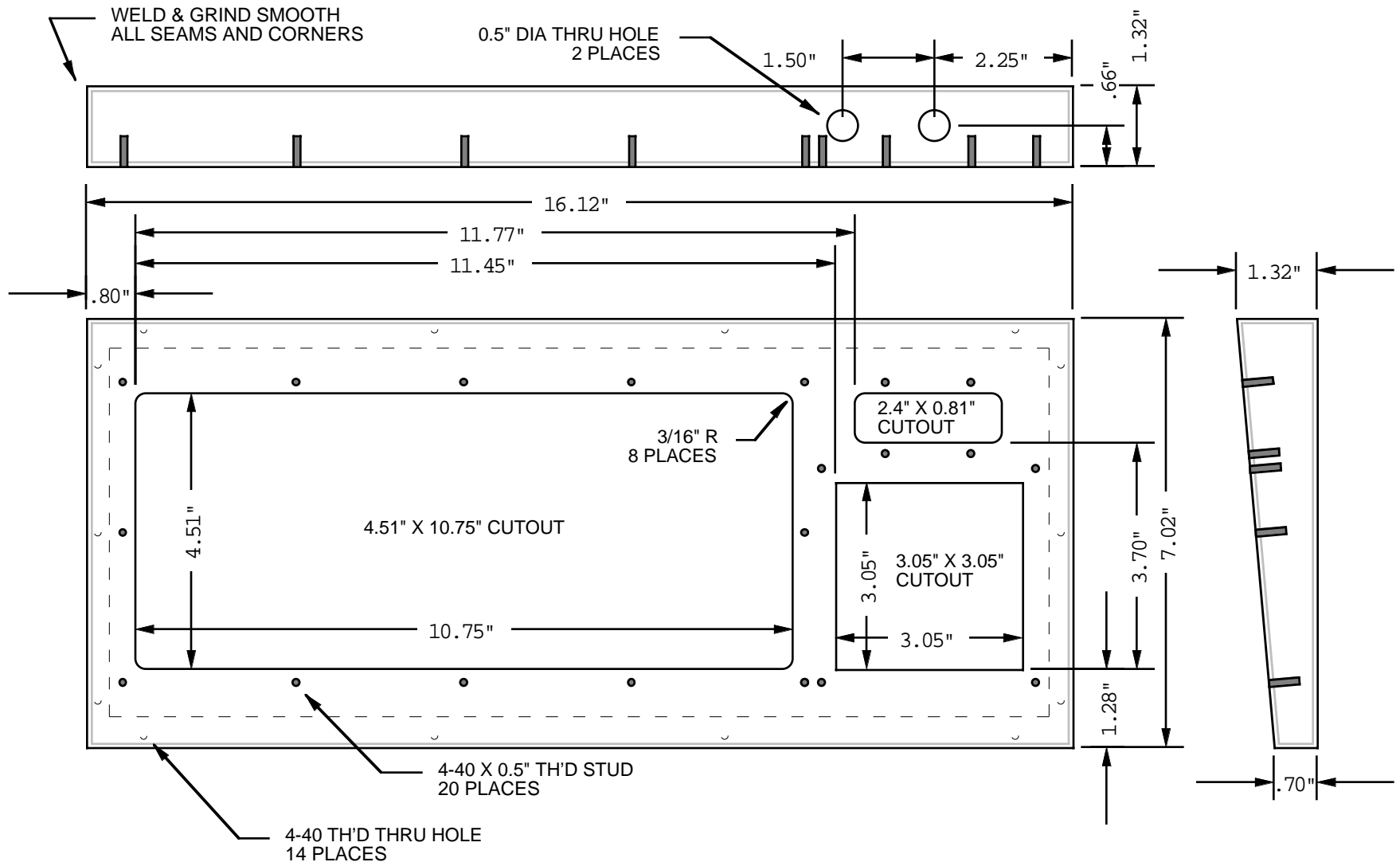


TOP VIEW



FABRICATE FROM 14 GAUGE (0.075") STAINLESS STEEL 304
 # 3 FINISH. FINISH GRAIN DIRECTION: LEFT TO RIGHT, SAND OR GRIND FOR FINISH

1:2.5

Texas Industrial Peripherals
 2621 Ridgpoint Dr. Suite 130
 Austin, Texas 78754

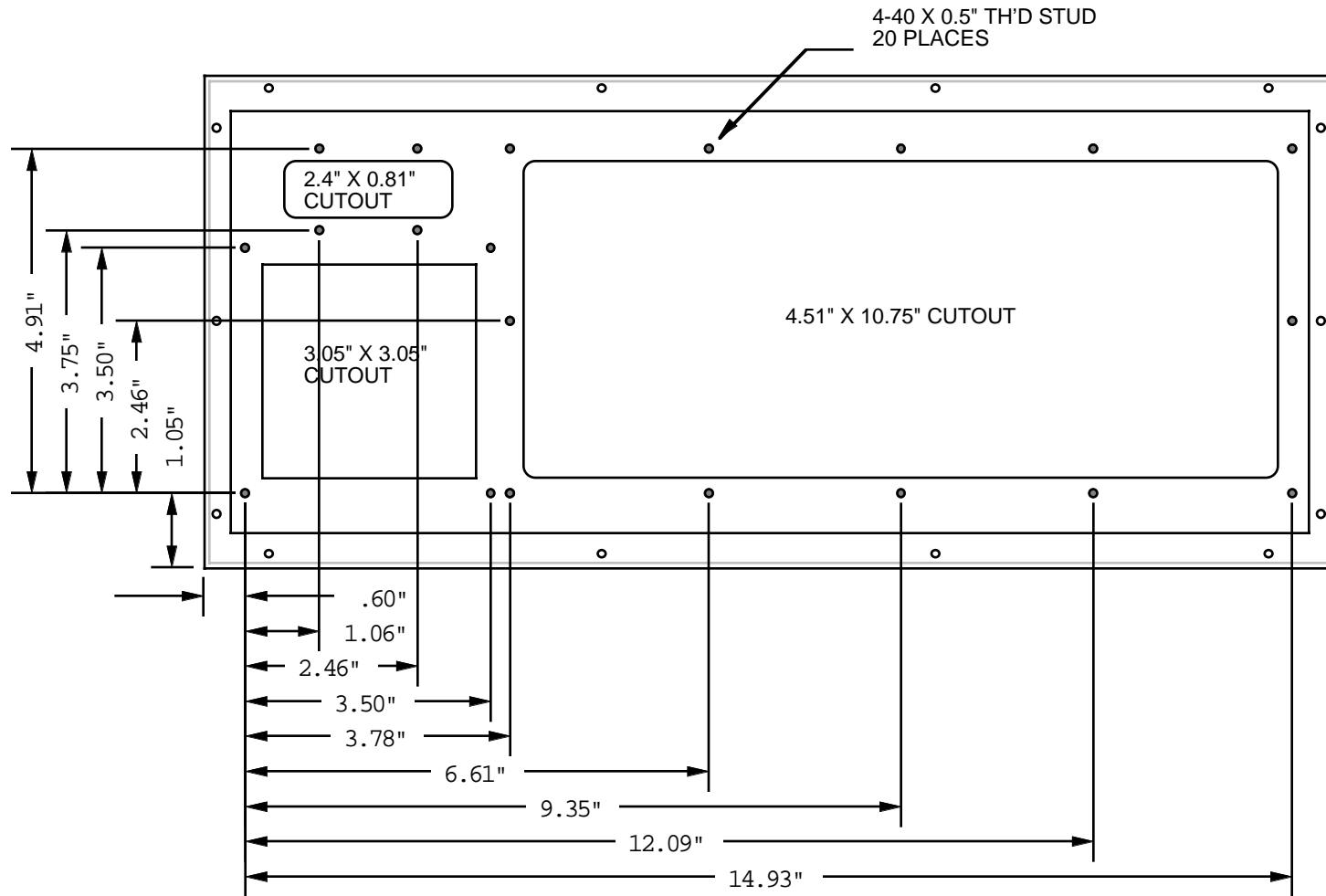
Voice: (512) 837-0283
 Fax: (512) 837-0207

Drawing Title: DT-810
 CASE
 MAX DIMENSIONS

Drawing Number: 96204
 Part Number: 96-DT0810-100

Sheet: 1 OF 3
 Date: 8/28/96
 VFS

BOTTOM VIEW



FABRICATE FROM 14 GAUGE (0.075") STAINLESS STEEL 304
3 FINISH. FINISH GRAIN DIRECTION: LEFT TO RIGHT, SAND OR GRIND FOR FINISH

1:2.5

Texas Industrial Peripherals
2621 Ridgepoint Dr. Suite 130
Austin, Texas 78754

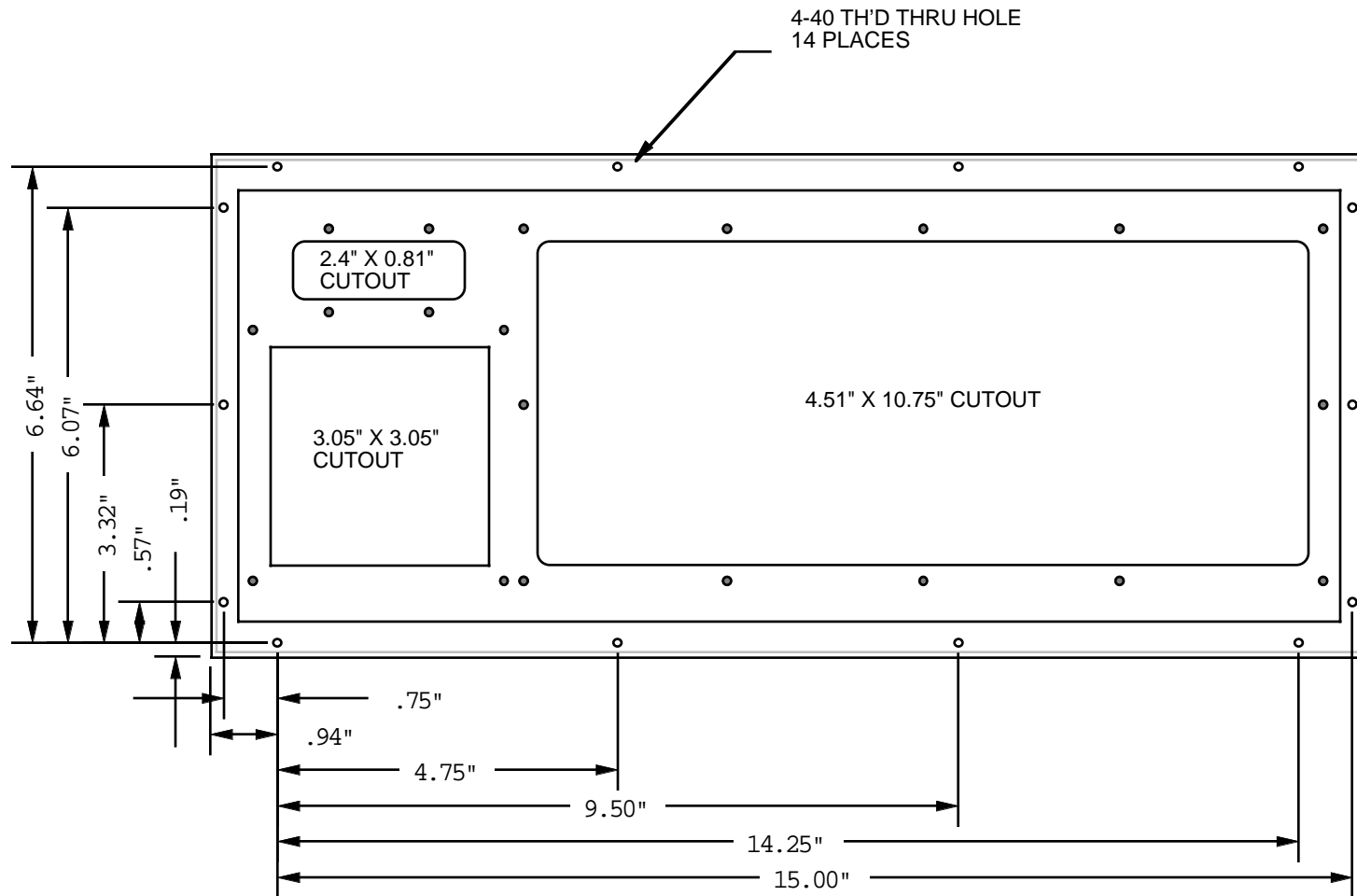
Voice: (512) 837-0283
Fax: (512) 837-0207

Drawing Title: DT-810
CASE
STUD PLACEMENT

Drawing Number: 96204
Part Number: 96-DT0810-100

Sheet: 2 OF 3
Date: 8/28/96
VFS

BOTTOM VIEW



FABRICATE FROM 14 GAUGE (0.075") STAINLESS STEEL 304
 # 3 FINISH. FINISH GRAIN DIRECTION: LEFT TO RIGHT, SAND OR GRIND FOR FINISH

1:2.5

Texas Industrial Peripherals
 2621 Ridgepoint Dr. Suite 130
 Austin, Texas 78754

Voice: (512) 837-0283
 Fax: (512) 837-0207

Drawing Title: DT-810
 CASE
 REAR COVER HOLE POS.

Drawing Number: 96204

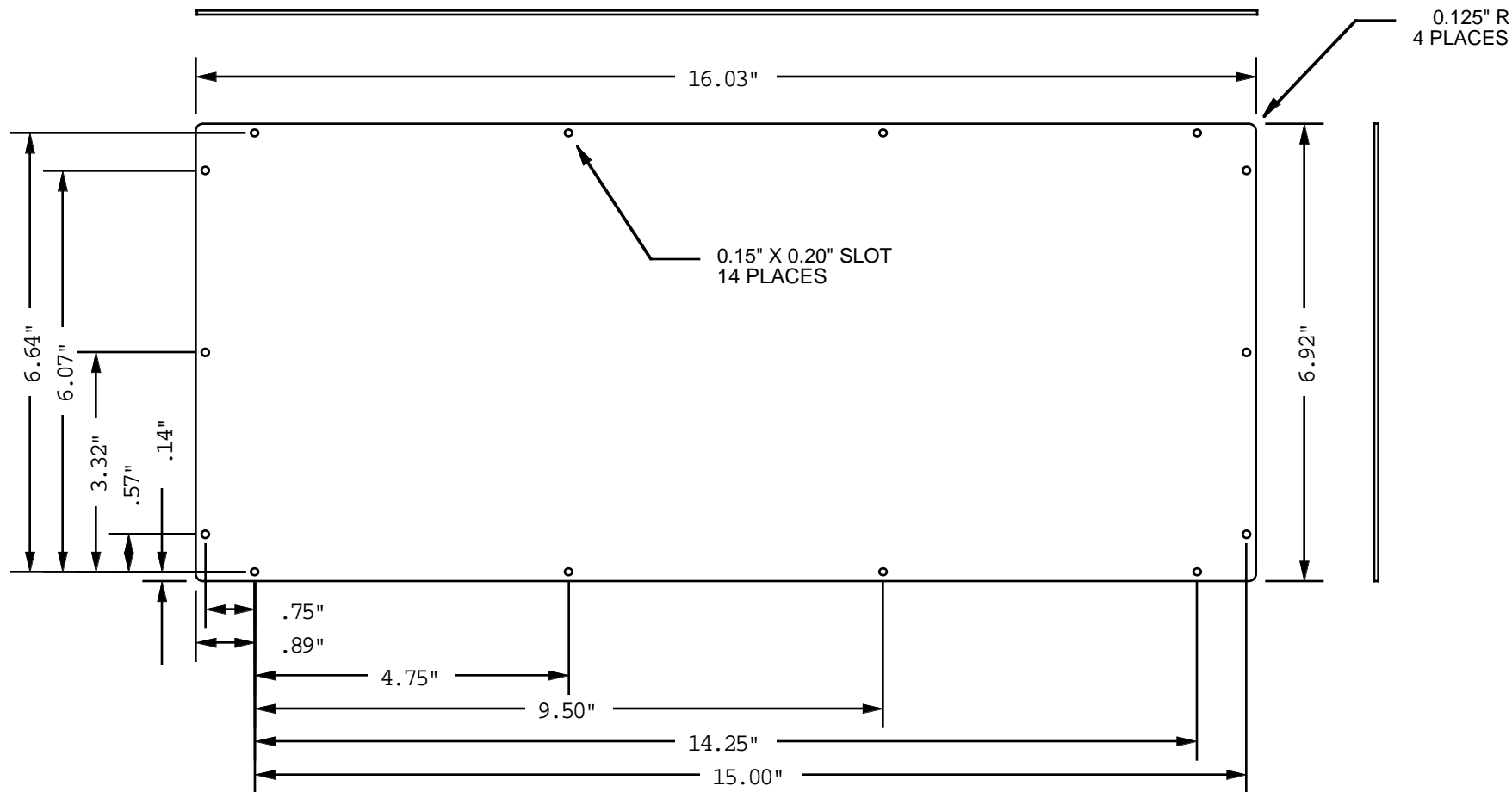
Sheet: 3 OF 3

Part Number: 96-DT0810-100

Date: 8/28/96

VFS

REAR COVER



FABRICATE FROM 16 GAUGE (0.060") STAINLESS STEEL 304
 #3 FINISH. FINISH GRAIN DIRECTION: LEFT TO RIGHT, SAND OR GRIND FOR FINISH

1:2.5

Texas Industrial Peripherals
 2621 Ridgepoint Dr. Suite 130
 Austin, Texas 78754

Voice: (512) 837-0283
 Fax: (512) 837-0207

Drawing Title: DT-810
 REAR COVER
 FAB SPECS.

Drawing Number: 96205

Sheet: 1 OF 1

Part Number: 96-DT0810-200

Date: 8/28/96

VFS