

4

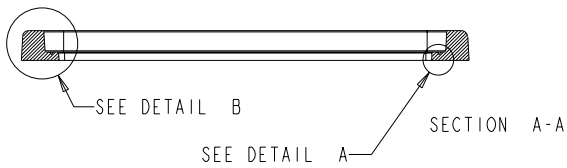
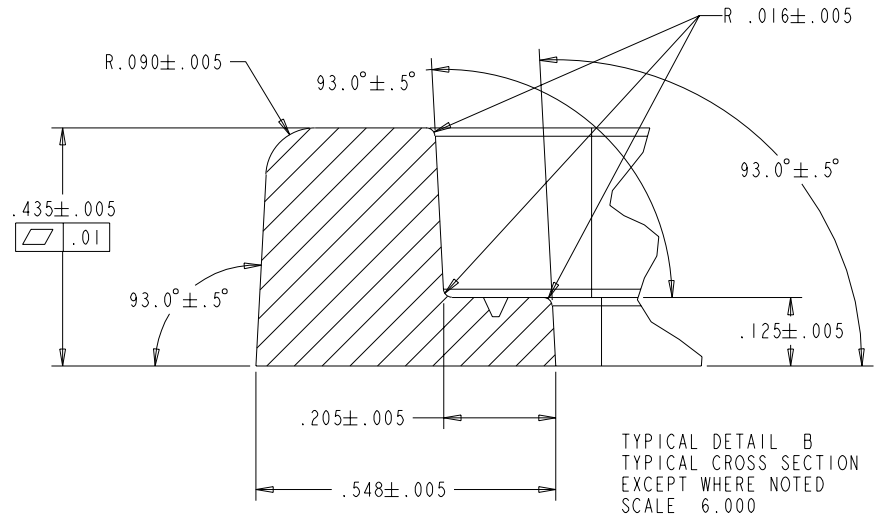
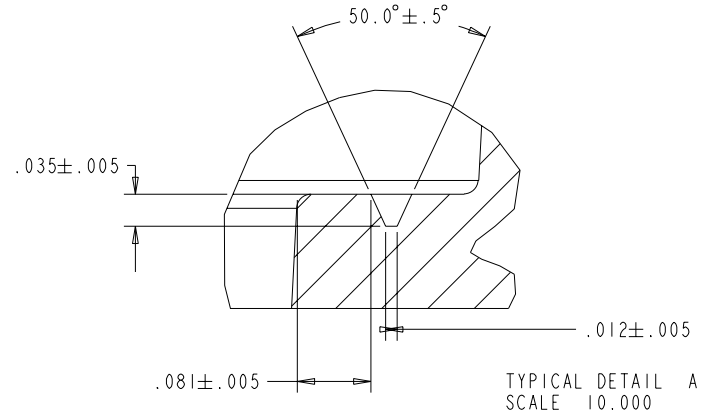
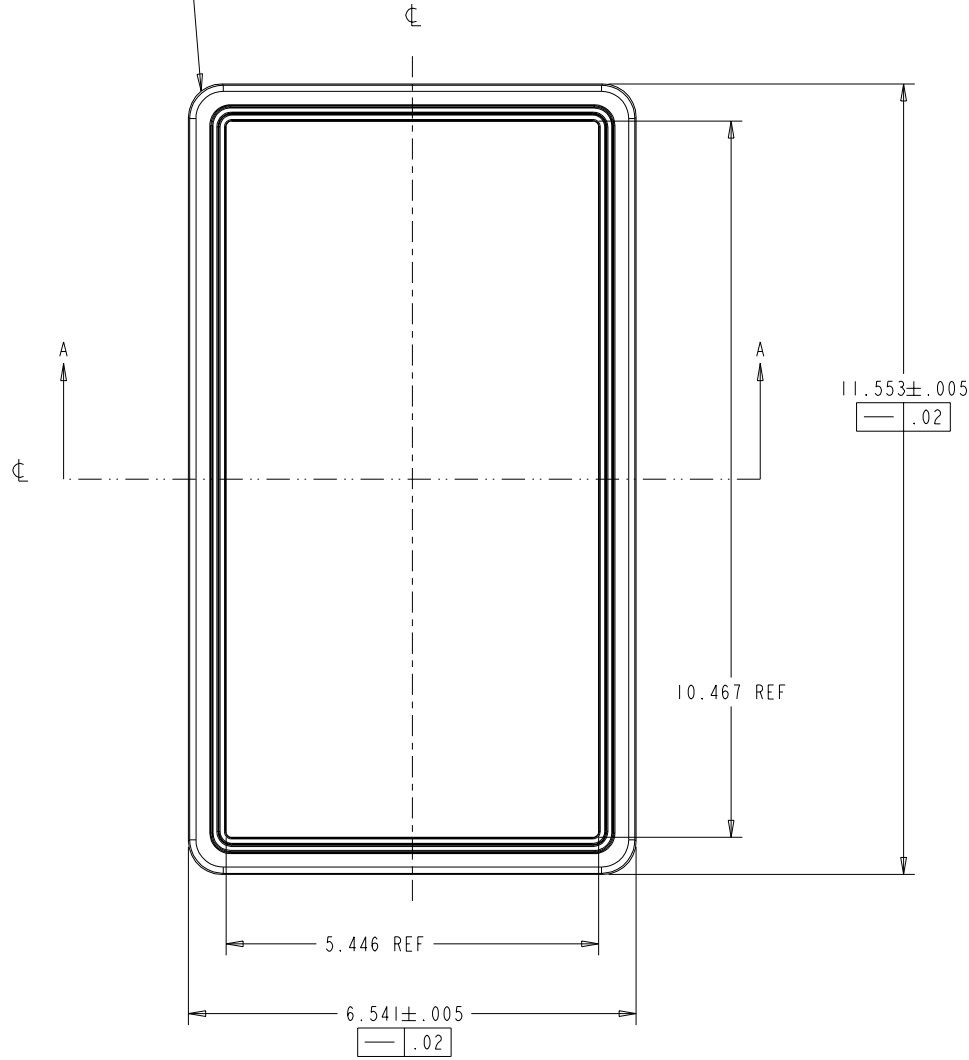
3

2

1

REVISIONS			
REV	DESCRIPTION	DATE	APPROVED
A	INITIAL RELEASE	10-10-01	-

R .49 ±.005 TYPICAL 4 PLACES
 NOTE: SECTION DOES NOT FOLLOW
 UNIFORM PROFILE THROUGH BEND.



GENERAL TOLERANCES x .x ±0.1 x .xx ±0.01 x .xxx ±0.005 ANG. ±0.5°	INTEGRATED DESIGN SYSTEMS, INC. 33 Great Neck Rd. Great Neck, NY 11021	APPROVED -	FOR Texas Industrial Peripherals Austin, TX, USA (512) 837-0283, 0207 (fax)
	DRAWN 10-10-01	NEXT ASSEMBLY -	UNIT - 911_OEM_FRAME
CHECKED	SHEET 1 OF 2	SCALE .750	TITLE - 911_OEM_FRAME
		SIZE C	DRAWING NO -
			REV A

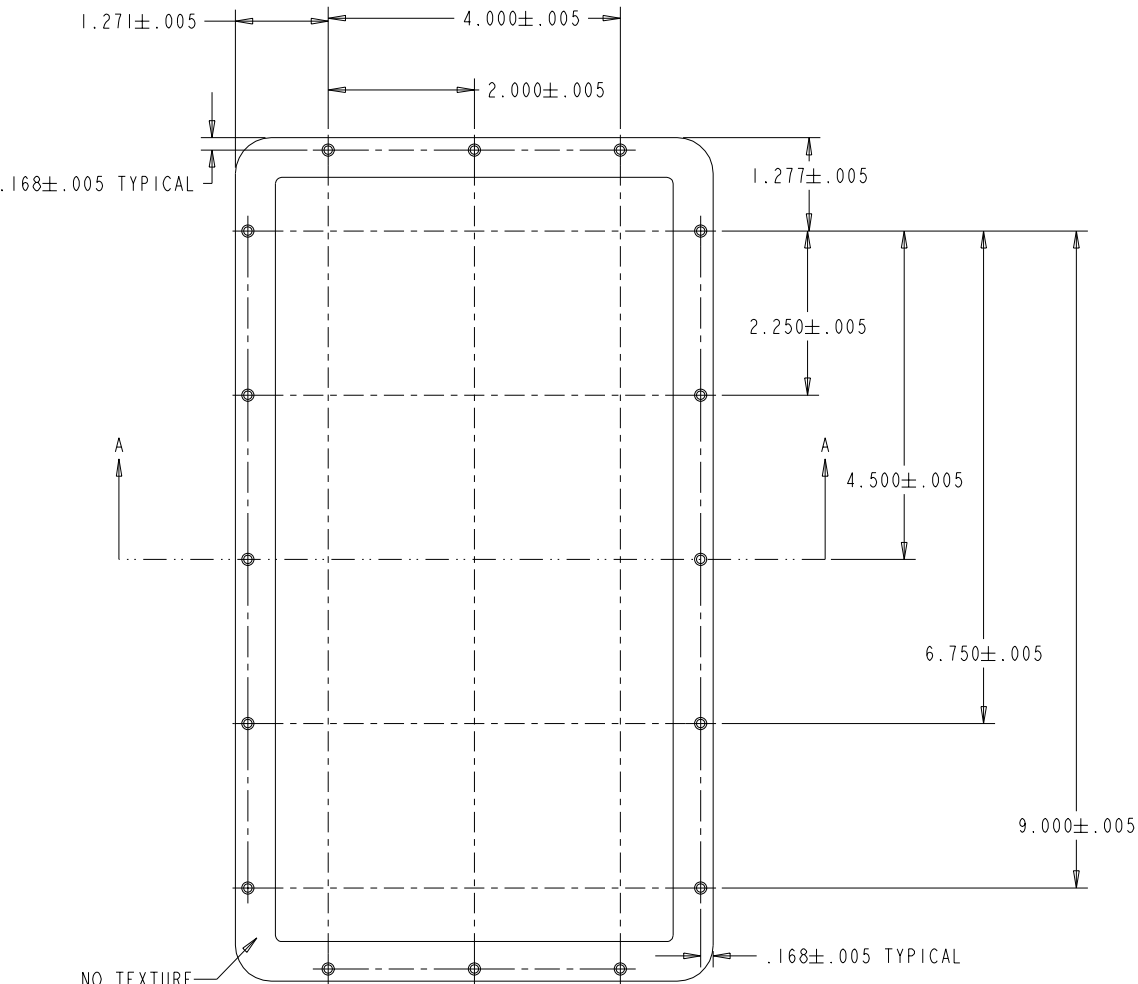
4

3

2

1

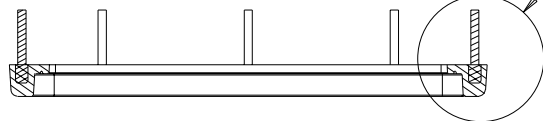
REVISIONS			
REV	DESCRIPTION	DATE	APPROVED
A	INITIAL RELEASE	10-10-01	-



NO TEXTURE THIS SURFACE

SCALE 0.800

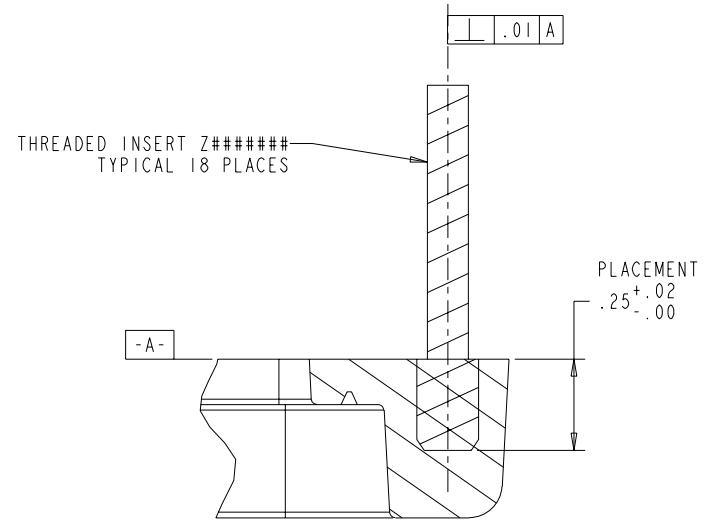
SEE DETAIL C



SECTION A-A

NOTES (UNLESS OTHERWISE SPECIFIED):

- MAT'L: GE CYCOLOY LG9000 PC/ABS OR EQUIVALENT, UV STABILIZED.
- COLOR: TO BE SPECIFIED BY TEXAS INDUSTRIAL PERIPHERALS.
- ALL NON-TEXTURED SURFACES TO HAVE SPI-SPE 3 FINISH.
- ALL SURFACES TO BE TEXTURED EXCEPT WHERE NOTED PER MOLD-TECH MT 1055-5 (.001 DEEP).
- PART TO BE FREE OF MOLD RELEASE.
- REMOVE ALL FLASH AND GATES.
- INDICATED AREA PART TO BE FREE OF CHIPS, CRACKS, SCRATCHES, FLOW MARKS, SINK MARKS AND BLEMISHES.
- KNOCKOUT PINS TO BE FLUSH OR BELOW SURFACE.
- ALL MOLDED FEATURES IN TOOL TO CONFORM TO "911_OEM_FRAME_1.16S".
- DO NOT SCALE DRAWING



DETAIL C
SCALE 4.000

GENERAL TOLERANCES x . x ±0.1 x . xx ±0.01 x . xxx ±0.005 ANG. ±0.5°	INTEGRATED DESIGN SYSTEMS, INC. 33 Great Neck Rd. Great Neck, NY 11021	APPROVED -	FOR Texas Industrial Peripherals Austin, TX, USA (512) 837-0283, 0207 (fax)
	DRAWN 10-10-01	NEXT ASSEMBLY -	UNIT - 911_OEM_FRAME
CHECKED -	SHEET 2 OF 2	SCALE -	TITLE - INSERT PLACEMENT
		SIZE C	DRAWING NO -
			REV A