

4

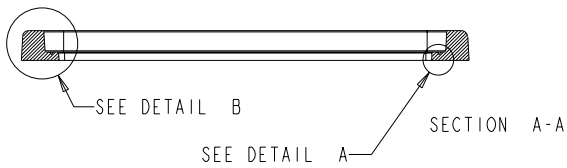
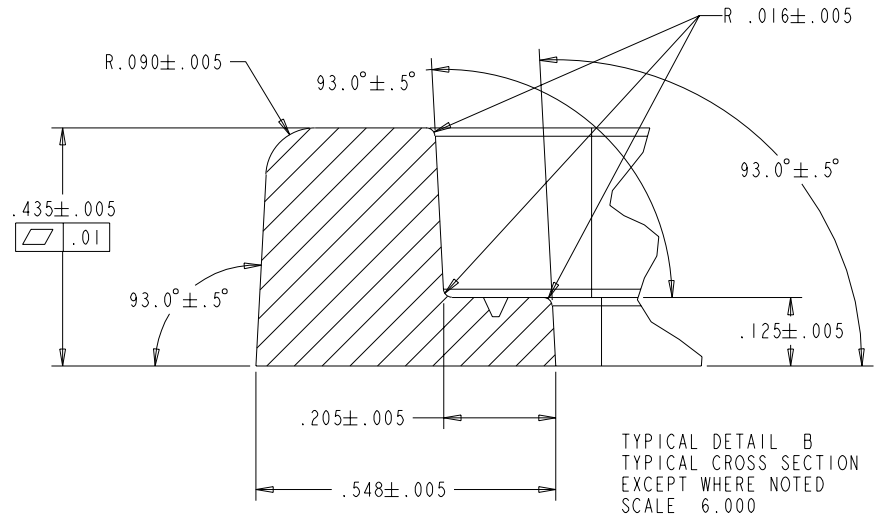
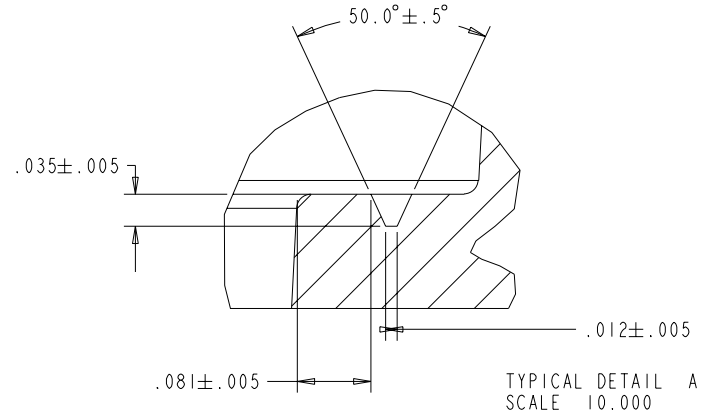
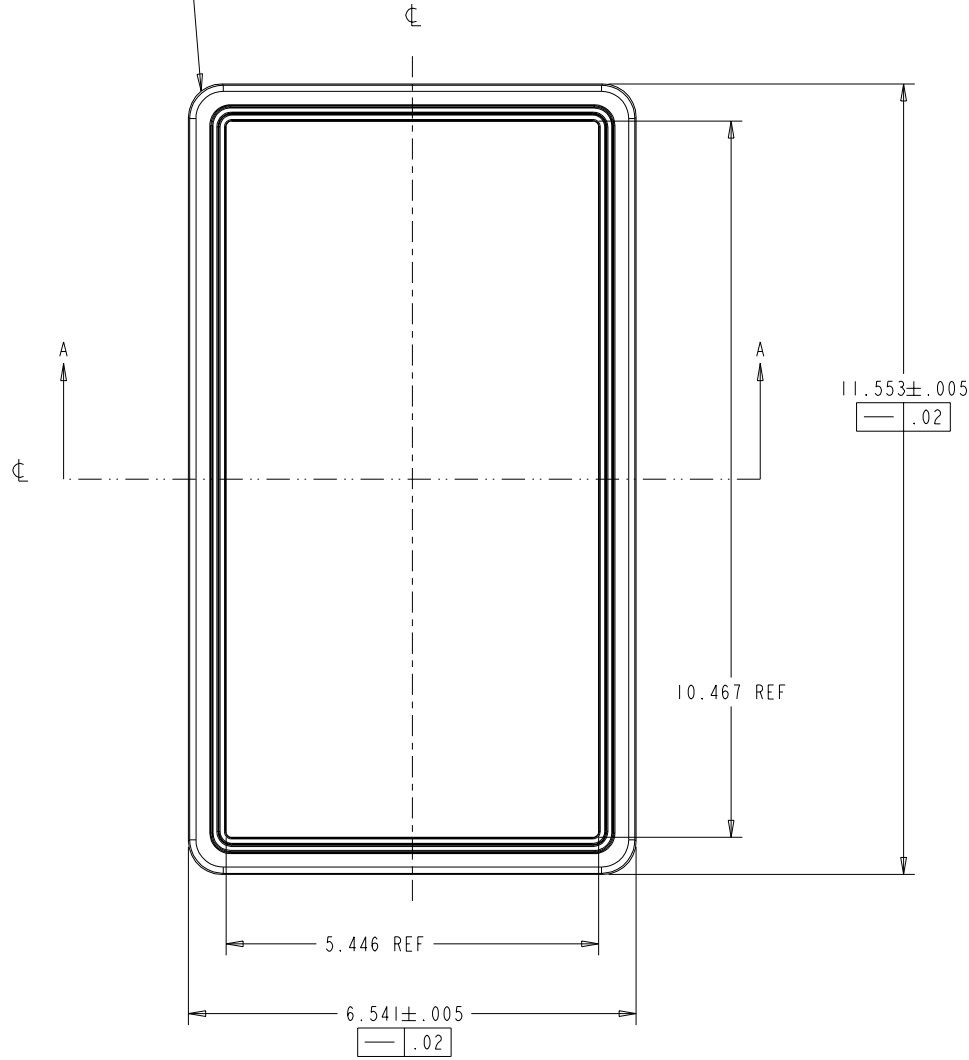
3

2

1

REVISIONS			
REV	DESCRIPTION	DATE	APPROVED
A	INITIAL RELEASE	10-10-01	-

R .49 ±.005 TYPICAL 4 PLACES
 NOTE: SECTION DOES NOT FOLLOW
 UNIFORM PROFILE THROUGH BEND.



GENERAL TOLERANCES x .x ±0.1 x .xx ±0.01 x .xxx ±0.005 ANG. ±0.5°	INTEGRATED DESIGN SYSTEMS, INC. 33 Great Neck Rd. Great Neck, NY 11021	APPROVED -	FOR Texas Industrial Peripherals Austin, TX, USA (512) 837-0283, 0207 (fax)
	DRAWN 10-10-01	NEXT ASSEMBLY -	UNIT - 911_OEM_FRAME
CHECKED	SHEET 1 OF 2	SCALE .750	TITLE - 911_OEM_FRAME
		SIZE C	DRAWING NO -
			REV A

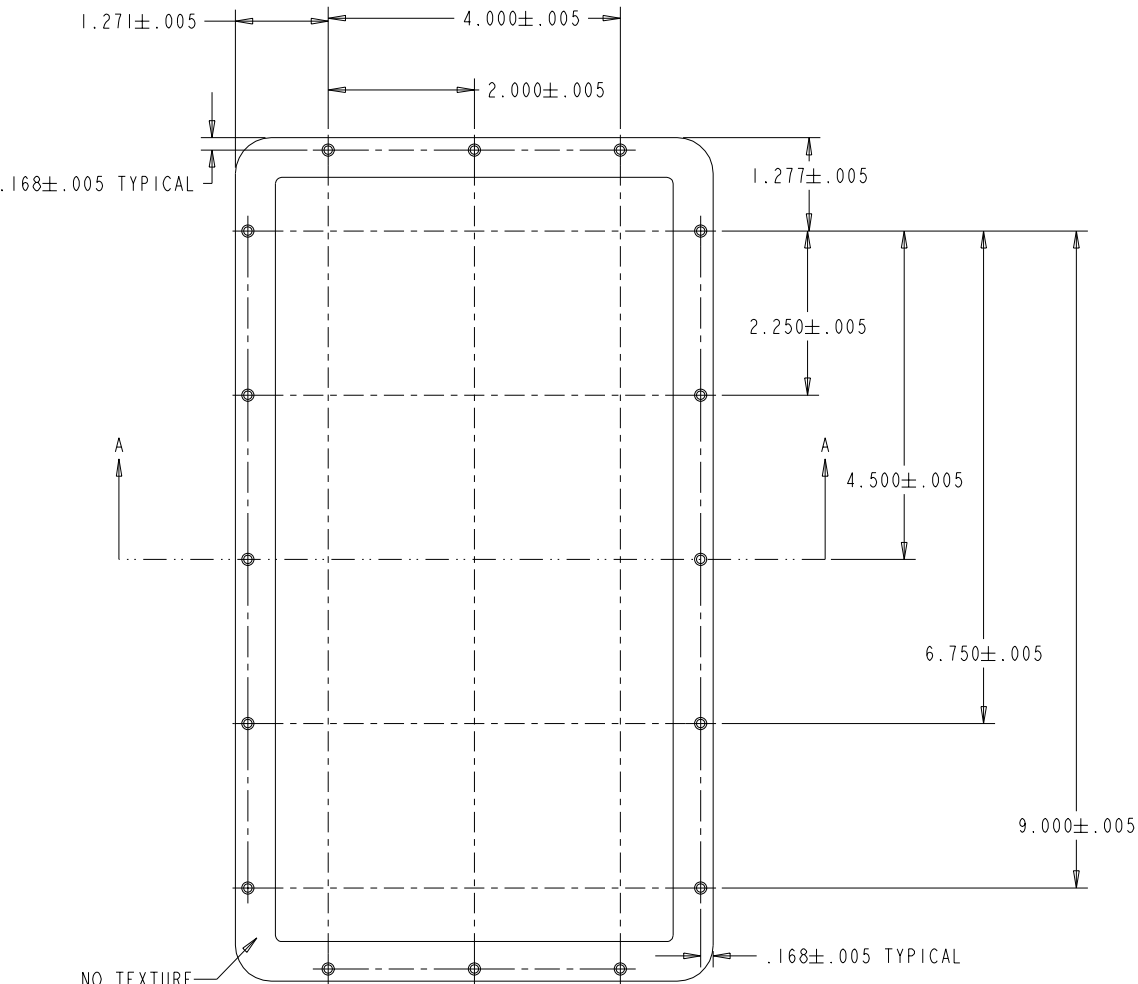
4

3

2

1

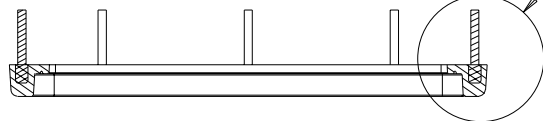
REVISIONS			
REV	DESCRIPTION	DATE	APPROVED
A	INITIAL RELEASE	10-10-01	-



NO TEXTURE THIS SURFACE

SCALE 0.800

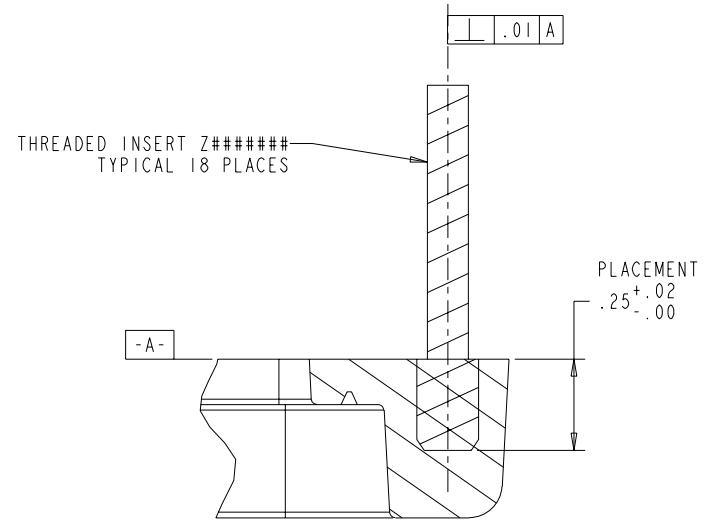
SEE DETAIL C



SECTION A-A

NOTES (UNLESS OTHERWISE SPECIFIED):

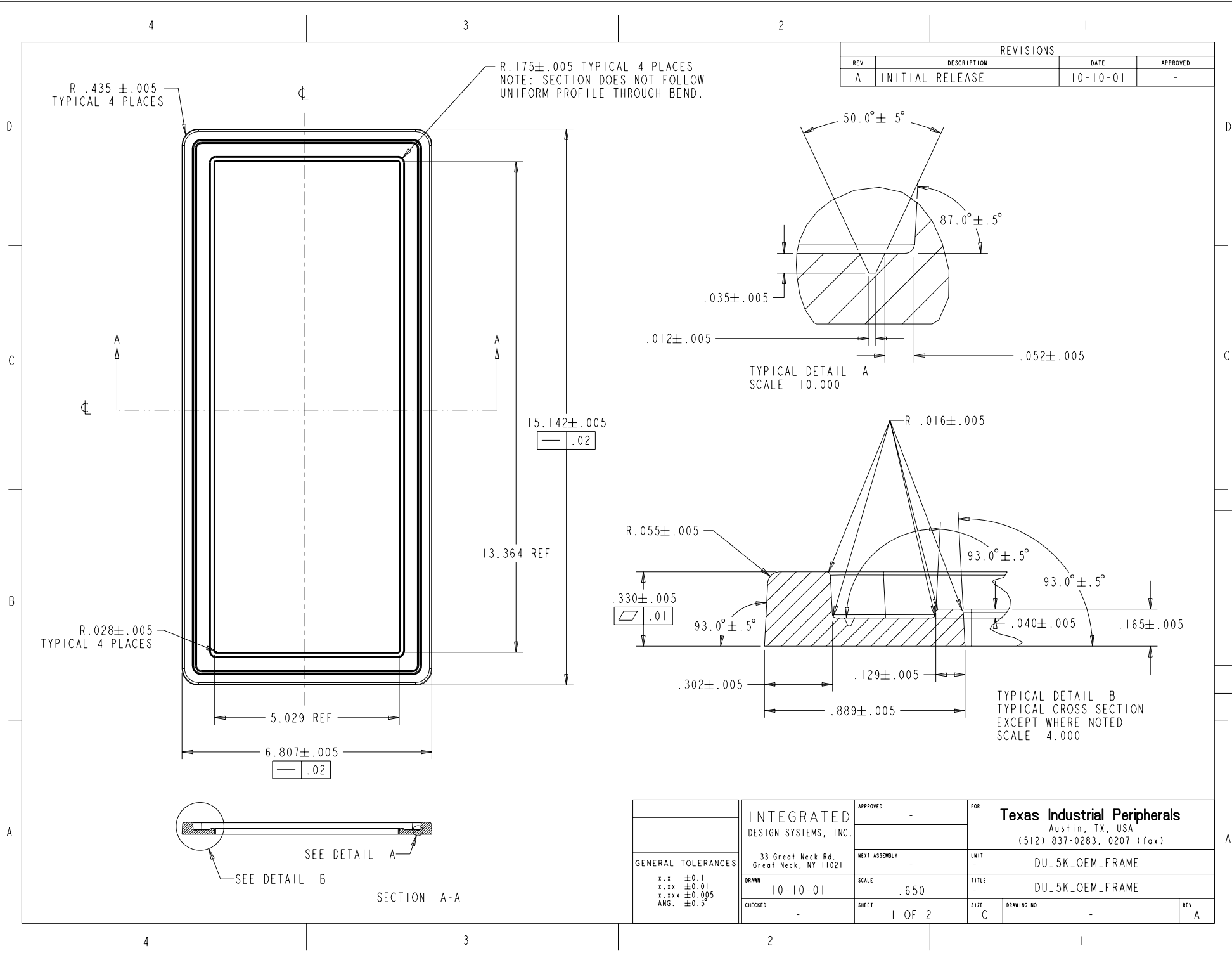
- MAT'L: GE CYCOLOY LG9000 PC/ABS OR EQUIVALENT, UV STABILIZED.
- COLOR: TO BE SPECIFIED BY TEXAS INDUSTRIAL PERIPHERALS.
- ALL NON-TEXTURED SURFACES TO HAVE SPI-SPE 3 FINISH.
- ALL SURFACES TO BE TEXTURED EXCEPT WHERE NOTED PER MOLD-TECH MT 1055-5 (.001 DEEP).
- PART TO BE FREE OF MOLD RELEASE.
- REMOVE ALL FLASH AND GATES.
- INDICATED AREA PART TO BE FREE OF CHIPS, CRACKS, SCRATCHES, FLOW MARKS, SINK MARKS AND BLEMISHES.
- KNOCKOUT PINS TO BE FLUSH OR BELOW SURFACE.
- ALL MOLDED FEATURES IN TOOL TO CONFORM TO "911_OEM_FRAME_1.16S".
- DO NOT SCALE DRAWING



DETAIL C
SCALE 4.000

GENERAL TOLERANCES x . x ±0.1 x . xx ±0.01 x . xxx ±0.005 ANG. ±0.5°	INTEGRATED DESIGN SYSTEMS, INC. 33 Great Neck Rd. Great Neck, NY 11021	APPROVED -	FOR Texas Industrial Peripherals Austin, TX, USA (512) 837-0283, 0207 (fax)
	DRAWN 10-10-01	NEXT ASSEMBLY -	UNIT - 911_OEM_FRAME
CHECKED -	SHEET 2 OF 2	SCALE -	TITLE - INSERT PLACEMENT
		SIZE C	DRAWING NO -
			REV A

REVISIONS			
REV	DESCRIPTION	DATE	APPROVED
A	INITIAL RELEASE	10-10-01	-



R.175 ± .005 TYPICAL 4 PLACES
NOTE: SECTION DOES NOT FOLLOW
UNIFORM PROFILE THROUGH BEND.

R.435 ± .005
TYPICAL 4 PLACES

R.028 ± .005
TYPICAL 4 PLACES

TYPICAL DETAIL A
SCALE 10.000

TYPICAL DETAIL B
TYPICAL CROSS SECTION
EXCEPT WHERE NOTED
SCALE 4.000



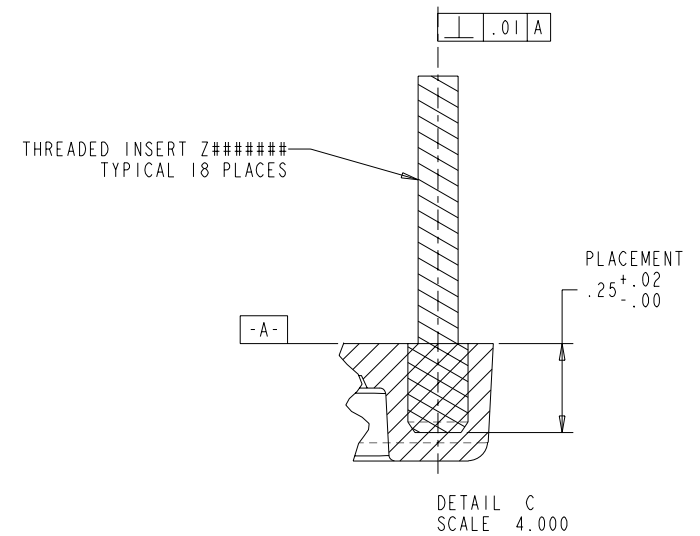
SECTION A-A

GENERAL TOLERANCES	INTEGRATED DESIGN SYSTEMS, INC. 33 Great Neck Rd. Great Neck, NY 11021	APPROVED	FOR	
			Texas Industrial Peripherals Austin, TX, USA (512) 837-0283, 0207 (fax)	
x.x ±0.1	DRAWN	NEXT ASSEMBLY	UNIT	DU_5K_OEM_FRAME
x.xx ±0.01			TITLE	DU_5K_OEM_FRAME
x.xxx ±0.005	10-10-01	SCALE	SIZE	DRAWING NO
ANG. ±0.5°	CHECKED	SHEET	REV	A
		1 OF 2		

REVISIONS			
REV	DESCRIPTION	DATE	APPROVED
A	INITIAL RELEASE	10-10-01	-

NOTES (UNLESS OTHERWISE SPECIFIED):

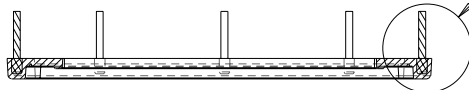
1. MAT'L: GE CYCOLOY LG9000 PC/ABS OR EQUIVALENT, UV STABILIZED.
2. COLOR: TO BE SPECIFIED BY TEXAS INDUSTRIAL PERIPHERALS.
3. ALL NON-TEXTURED SURFACES TO HAVE SPI-SPE 3 FINISH.
4. ALL SURFACES TO BE TEXTURED EXCEPT WHERE NOTED PER MOLD-TECH MT 1055-5 (.001 DEEP).
5. PART TO BE FREE OF MOLD RELEASE.
6. REMOVE ALL FLASH AND GATES.
7. INDICATED AREA PART TO BE FREE OF CHIPS, CRACKS, SCRATCHES, FLOW MARKS, SINK MARKS AND BLEMISHES.
8. KNOCKOUT PINS TO BE FLUSH OR BELOW SURFACE.
9. ALL MOLDED FEATURES IN TOOL TO CONFORM TO "DU_5K_FRAME_1.IGS".
10. DO NOT SCALE DRAWING



NO TEXTURE THIS SURFACE

SCALE 0.700

SEE DETAIL C



INTEGRATED DESIGN SYSTEMS, INC. 33 Great Neck Rd. Great Neck, NY 11021		APPROVED - NEXT ASSEMBLY - SCALE - SHEET 2 OF 2	FOR Texas Industrial Peripherals Austin, TX, USA (512) 837-0283, 0207 (fax)
GENERAL TOLERANCES x.x ±0.1 x.xx ±0.01 x.xxx ±0.005 ANG. ±0.5°	DRAWN 10-10-01 CHECKED -	UNIT - TITLE - SIZE C	DU_5K_OEM_FRAME DETAIL VIEWS DRAWING NO - REV A