



## PM-2000-TB

### Main Features

- Integrated Trackball
- 114-Key Functionality
- 24 Function Keys + 10-Key Numeric Pad
- PS2 and Separate-Cable USB Configurations Available
- Various Keyboard and Language Layout Options

### Typical Applications

- Commercial
- Industrial
- OEM
- Oil and Gas
- System Integrators

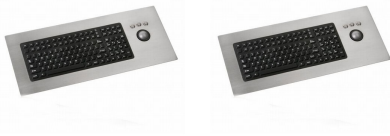


## Product Description

---

The PM-2000-TB is constructed using a highly-rugged stainless steel case and industrial silicone rubber pad, ensuring NEMA 4X protection in extremely rugged applications.

The PM-2000-TB provides users with a full 114-key industrial keyboard and trackball industrial pointing device. It has two rows of function keys that allow for single keystroke access to software shortcuts. The laser trackball pointing device is integrated into the keyboard for additional usability.



## Technical Specifications

---

<b>SKU</b>	PM-2000-TB
<b>Manufacturer</b>	iKey
<b>Country of Manufacture</b>	United States
<b>IP Rating</b>	No
<b>Number Of Keys</b>	114
<b>Function Keys</b>	24 Keys
<b>Key Material</b>	Silicone Rubber
<b>Pointing Device</b>	Trackball
<b>Backlight</b>	No Backlight
<b>Mounting Options</b>	Top Mount
<b>Interface Options</b>	PS2, USB
<b>Shock</b>	3 x 11 ms pulses of 50g on each of 3 axes
<b>Cable</b>	LENGTH: 10 feet (3 meters) DESIGN: "Y" PS/2 or two USB cables
<b>Vibration</b>	POWER SPECTRAL DENSITY: 0.04g/Hz FREQUENCY RANGE: 20Hz - 2 kHz DURATION OF TEST PER AXIS: 3 hours
<b>Power</b>	PS/2: KEYBOARD: 50mA@5V (from Keyboard port) POINTER: 45 mA@5V (from Mouse port) USB: 95mA@5V (from CPU port)
<b>Flammability</b>	PRINTED CIRCUIT BOARD: 94 VO SILICONE OVERLAY: 94HB INTERFACE CABLE: 94 VO
<b>Compatibility</b>	PS/2 KEYBOARD/TRACKBALL: All Windows Operating Systems USB KEYBOARD/TRACKBALL: All Windows and Macintosh OS
<b>Temperature Range</b>	STORAGE: -40C to +85C (-40F to +185F) OPERATING: 0C to +55C (+32F to +131F)
<b>Weight</b>	5.75 lbs +/- 0.10 lbs (2.61 kg +/- 0.05 kg)
<b>Warranty</b>	1 Year Limited Warranty
<b>Humidity</b>	100% Humidity Resistant (when properly installed)
<b>Dimensions</b>	21.80" x 9.20" x 0.44" (w-h-d) 553.7mm x 233.7mm x 11.2mm SCREWS: 1.58" (40.1mm)
<b>Certifications</b>	IP Rated, NEMA 4X, CE UL60950, FCC Part 15 Class B
<b>Model Number(s)</b>	PM-2000-TB-PS2: With PS/2

cable  
PM-2000-TB-USB: With USB cable

---

